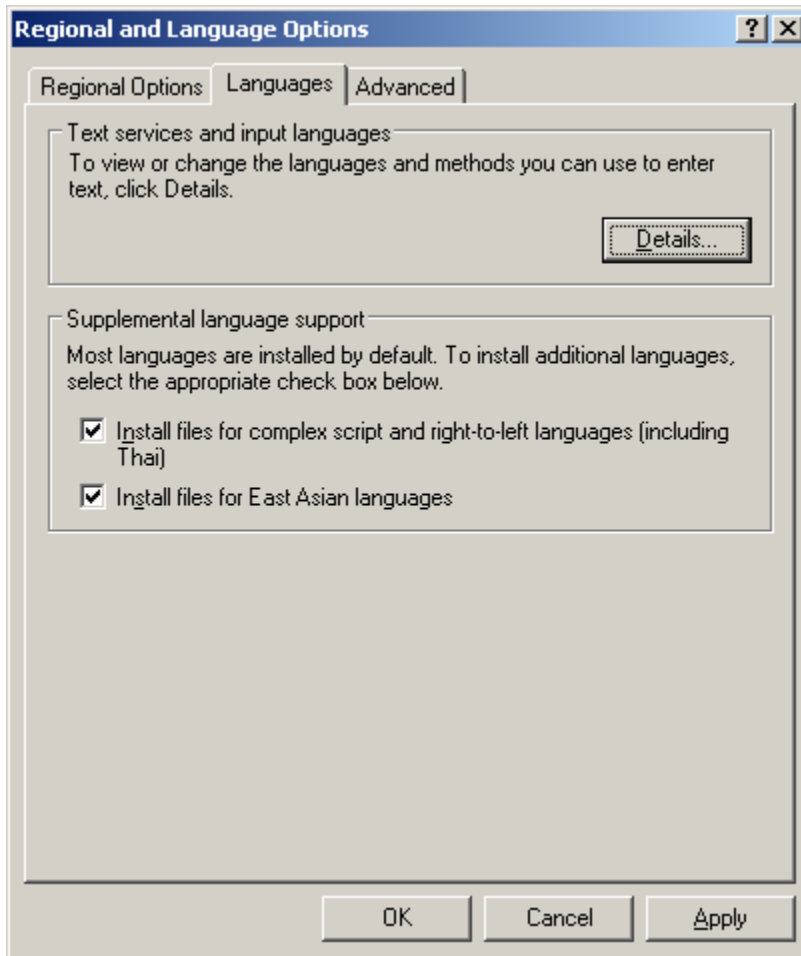


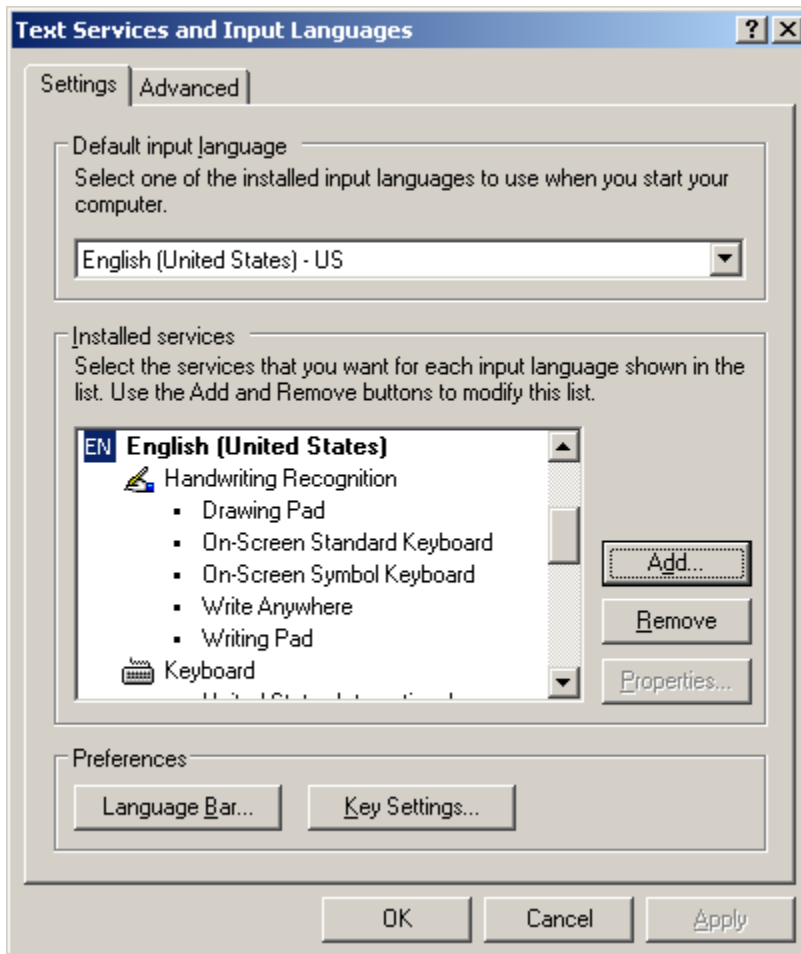
Setting Unicode Font

1) Select Control Panel – > Regional Language Settings -> Language Tab and Select Install files for complex script and East Asian Languages as shown below and click 'OK" and 'Apply'..

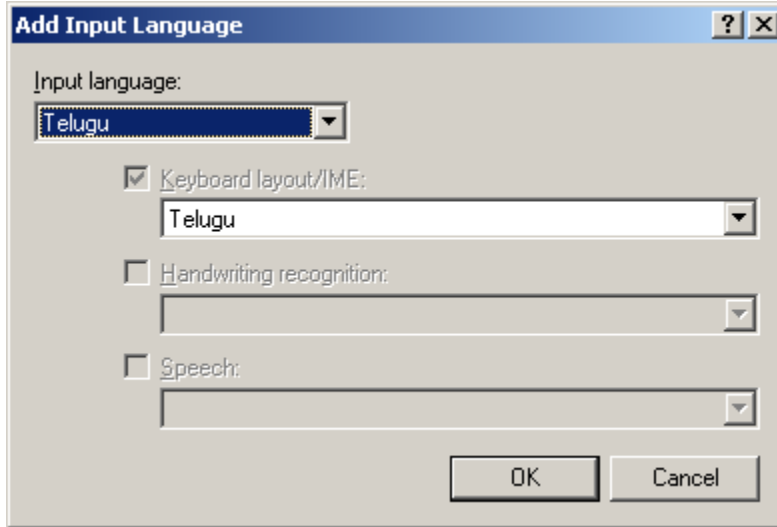
System may ask for OS CD if files are not installed so far.



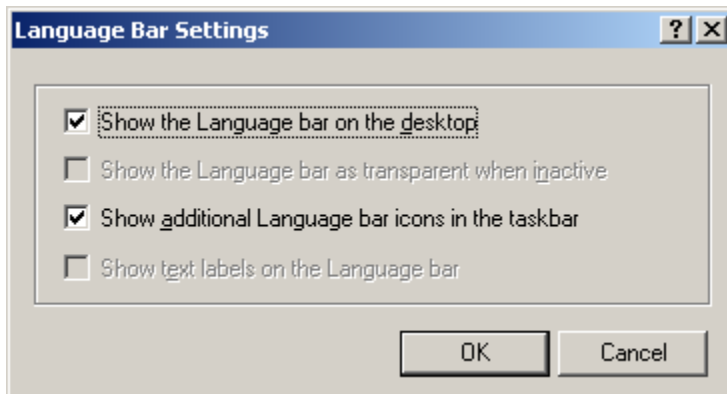
2) Then click on Details Button to add languages and screen will appear as shown below.



3) Click **Add** to add telugu and you will get Language Selection Screen as shown below.



4) Also add Language Bar on the desktop



Now the Language Bar will appear on desktop. User can choose the language in which they want to enter data.

Different Steps in the Font configuration process

